

# Canoe Slalom Centre

Activities Plan for FY2022



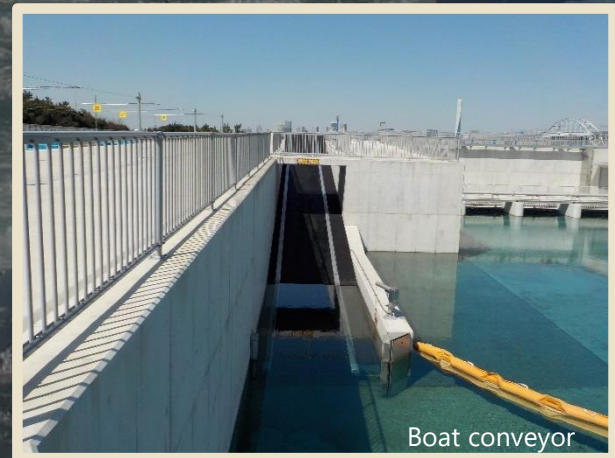


## Facility overview

- Location: 6-1-1 Rinkai-cho, Edogawa-ku, Tokyo (Adjacent to the Kasai Rinkai Park)
- Main facilities: Competition course (approx. 200m length), warm-up course, pumping station, water filtering facility, management center (boathouse etc.) etc.
- Sports: Olympic/ Canoe (Slalom)
- Completion date: Sports facility May 2019  
(Facility operation starts from July 6 2019)  
Management center Dec. 2019
- Reopening: Partially reopen July 23 2022  
Scheduled to fully reopen around Apr. 2023

## Facility management concept

- This is a sole artificial slalom course in Japan. Along with using it to enhance and develop athletes, and provide the Tokyo residents with opportunities of a wide range of water sports and leisure, create a vibrant environment in concerted efforts with neighboring parks.







Competition course

## Canoe Slalom Centre Facility introduction



Finish Pool



Terrace



Lounge



Boathouse



## Main Activities Plan for FY2022\*

\*Note: There are still some areas which will remain under construction in FY2022, so the facility will be utilized within a scope which does not impact these areas.

### Competitions and training usage

- In addition to hosting sports competitions, the facility will also be used as a training space for sports organisations and athletes.

#### ◎2022 All Japan Canoe Slalom Championships / 45th Japan National Championships/ NHK Cup

As the only artificial slalom course in Japan, the facility will be the site of intense competition between top-class athletes.

#### ◎Use for practice by sports organisations

This facility will provide a space for improving the skills of athletes competing in canoe and other water sports through special training sessions and day-to-day training use.

#### ◎Canoe slalom and race rafting event for recording official times

Events are scheduled to be held for a multiple sports. This will provide an opportunity for athletes to confirm the results of their day-to-day training efforts.



### Providing opportunities for water sports and leisure activities through multipurpose facility usage

- A variety of services will be provided to Tokyo residents through this facility.

#### ◎Rafting tour

A full-scale rafting tour will be implemented using the strong currents of the competition course. (Around 130 times per year)

#### ◎Canoeing experience events, canoe classes

Canoe classes where people with no experience can take part in and a school for athletes interested in improving their skills will be implemented. (Around 40 sessions per year)

#### ◎Promote use as a unique venue

Coordination efforts with related personnel are underway for multipurpose usage such as on-location shoots, corporate training sessions, and drowning rescue drills.



### Coordination with surrounding facilities

- Further promote the appeal of this space through coordination with a variety of other facilities.

#### ◎Initiatives with neighboring facility operators

Initiatives such as consideration of shared tickets are in progress with neighboring parks and other facilities near the train station.



## FY2022 Activities Schedule

	Facility use schedule
April	(Before reopening) • 2022 Canoe Slalom Japan National Qualification
May	(Before reopening)
June	(Before reopening)

	Facility use schedule
July	<b>(Partially reopen: July 23)</b> <ul style="list-style-type: none"> <li>• <b>Reopening event</b></li> <li>• Kayaking experience events</li> <li>• Rafting tour</li> <li>• Event for recording official times.(Canoe, Rafting race)</li> </ul>
Aug.	<ul style="list-style-type: none"> <li>• Use for practice by sports organisations</li> <li>• Rafting tour</li> <li>• Kayaking experience events</li> <li>• Kayak class (beginners, intermediate, upper intermediate, advanced, roll )</li> <li>• Legacy tour (facility tour)</li> </ul>
Sept.	<ul style="list-style-type: none"> <li>• Use for practice by sports organisations</li> <li>• Rafting tour</li> <li>• Packraft tour</li> <li>• Kayaking experience events</li> <li>• Kayak class (beginners, intermediate, upper intermediate, advanced, roll )</li> <li>• Pleasure rafting</li> <li>• Canoeing experience event for the impaired</li> <li>• Lecture for volunteers assisting at impaired canoeing event</li> </ul>



## FY2022 Activities Schedule

	Facility use schedule
Oct.	<ul style="list-style-type: none"> <li>• 2022 All Japan Canoe Slalom Championships</li> <li>• 45th Japan National Championships/ NHK Cup</li> <li>• Use for practice by sports organisations</li> <li>• Rafting tour</li> <li>• Rafting trial class</li> <li>• Packraft tour</li> <li>• Kayaking experience events</li> <li>• Kayak class (beginners, intermediate, upper intermediate, advanced, roll )</li> <li>• Sports day memorial event</li> <li>• Rescue lecture</li> <li>• Facility tours</li> </ul>
Nov.	<ul style="list-style-type: none"> <li>• Use for practice by sports organisations</li> <li>• Kayak class (upper intermediate)</li> <li>• Rafting class</li> <li>• Kayaking experience events</li> <li>• Facility tours</li> </ul>
Dec.	<ul style="list-style-type: none"> <li>• Use for practice by sports organisations</li> <li>• Kayak class (upper intermediate)</li> <li>• Event for recording official times.(Canoe, Rafting race)</li> <li>• Kayaking experience events</li> </ul>

	Facility use schedule
Jan.	(Water replacement inspection)
Feb.	(Water replacement inspection)
Mar.	<ul style="list-style-type: none"> <li>• Use for practice by sports organisations</li> <li>• Kayak class (upper intermediate)</li> <li>• Canoeing experience events</li> </ul>

\* As of Feb. 28 2022

## For inquiries

### ◆ Inquiries relating to each project/events etc.

**Venue Development Section 1,  
Tokyo 2020 Games Venues Division,  
Bureau of Olympic and Paralympic Games Tokyo 2020  
Preparation  
Tokyo Metropolitan Government**

8-1 Nishi-Shinjuku 2-chome, Shinjuku-ku, Tokyo 163-8001  
Tel: 03-5388-2271  
E-mail: [S1050502@section.metro.tokyo.jp](mailto:S1050502@section.metro.tokyo.jp)  
URL: <https://www.sports-tokyo-info.metro.tokyo.lg.jp/english/>



- Sufficient infection control measures will be taken for each project and events as of this writing.

### ◆ Inquiries relating to facility use including reservation

Facility Operator: KYOEI CORPORATION

6-1-1 Rinkai-cho, Edogawa-ku, Tokyo 134-0086  
Tel: 03-6808-6100  
URL: <https://canoe-slalom.tokyo/en/>



← Please check the facility webpage for more details on reservation !

(Issued by)  
March 2022

**Venue Development Section 1,  
Tokyo 2020 Games Venues Division,  
Bureau of Olympic and Paralympic Games Tokyo 2020  
Preparation  
Tokyo Metropolitan Government**